

Brush & Spray

Chicago Paint & Coatings Association

President's Message from Greg McWright

Special points of interest:

- ⇒ President's Message
- ⇒ Holiday Party Recap
- ⇒ Upcoming Events



Buckle your seat belts. We may be in for a bumpy ride in 2009. Our industry has had

to endure shrinkage and the results of many mergers and acquisitions over the last few years. The poor economy has caused many layoffs in any industry related to housing and automobiles. It now seems that these effects have spilled over into just about most other parts of the economy.

In such a climate, it seems all we can do is perform to the best of our abilities at the jobs we have. I think it helps for companies and individuals to use the resources of agencies like the Chicago Paint and

Coatings Association. Though we are all separate companies and often are competitors, we are all affected by this economic downturn in similar ways.

I think it still makes sense to advertise. Our potential customers need to know who we are and what we offer that may help their businesses thrive. We publish an annual Coatings Business Directory that is a "who's who" in Chicago-land paint and coatings. Companies have an opportunity to advertise in this important publication.

Regulations affect all of us in one way or another. We are having a **Regulatory Luncheon on February 17th**, where we will keep our members apprised of any new or upcoming issues that may have to address.

The CPCA also allows us to network and have a general feel for what is going on in our industry.

It's the Association's responsibility to bring value to our member companies and to our industry as a whole. Please let us know when we are doing things right, and when we could do things better. If we all do things to the best of our ability, we will weather this economic storm and come out on the other side all the more strong for it.

Inside this issue:

Message from the	1
Tim Clue interview	2
Joint Holiday Party	3
Upcoming Events	4

An Interview with Tim Clue by Bill Heiden

I attended this years Christmas party with great anticipation. The joint holiday party between the CPCA and CSCT was going to have Tim Clue a stand up comic from the area. I have heard Tim many times on WGN radio with Steve Cochran a local talk show host

on from 4 until 7 PM on week-days. Steve himself is also a part time MC/Host/Stand up comic. Tim frequents the show in person or by telephone with Steve and is always entertaining. I decided that with our new attempt at making the newsletter and web site a place

we hope you as members of the member companies visit at least once a month or two. I wanted to do something different from the past. So I set out to get a few moments before his performance at the Christmas Party and do an interview. My apologies to Tim if I

Tim Clue Continued

Q How did you get started?

Tim- it was 22 years ago during the Comedy boom of the 80's and 90's. I was working on my masters and comedy clubs were all over the area. I often would perform at armature night at the Roxy. You'd go there would go grab a number to get on stage and they would give you 10 minutes to do your show.

Q. Was comedy something that was just natural to you?

Tim- Somewhat. Comedy though is an act of attrition - you have to do it for a long time with lots of failures. I did it for five years and had some miserable failures then all on the sudden you catch on fire.

Q. Who in the comedy business influenced you?

Tim- Well... early on it was Cosby, Carlin then you discover Pryor and you delve off into other worlds and learn about Newhart, Andy Griffith who did stand up and Lenny Bruce. I had mentors like Seinfeld, Bill Hicks and discovered Ellen DeGeneres and saw how a professional works. I was impressed with those who figured it out.



Q. What is the most difficult part of doing stand-up?

Tim - Doing private events, company events is difficult. I do clean comedy and how to make that work vs. the business environment. It can be challenging because you have to watch every word you say. Another would be finding good work. Just getting on stage and breathing and thinking at the same time. It took me five years to breathe and remember what I was going to say at the same time.

Q. Where do your ideas come from?

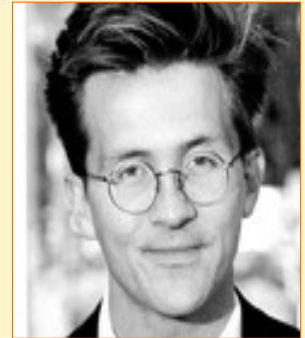
Tim - Comedy is comedy. It stands the test of time. People, politics, and pop culture like I-Pods these are the things that keep comedy universal.

Q. How has comedy changed?

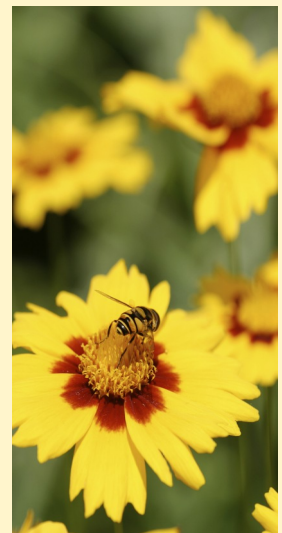
Tim - There are fewer places to perform. Why? Because at one time there were too many places to perform and it became saturated. Just like the marketplace it has its highs and lows. Still it is cool to be a comic but it is no longer in... Funny went to L.A. to get on TV...that was the craze.

Today sitcoms have also changed, there are no longer laugh tracks it's an era that is moving away. The art does not change.. performers change we just look at what is ironic, wrong... what is not right. Comedy is timeless though, the source material might change but people still need something to rub against.

Tim had a wonderful performance at the Christmas party and was well received, it was great to talk to him. He even stayed later and talked with people in attendance. If you have never seen him before you should catch one of his future performances. You can see where Tim is performing by checking his web site: www.timclue.com



Comedian
Tim Clue



The 2009 Directory & Buyer's Guide is now available.

Please call Brenda at

847-240-0102 if you have not received your copy.


Joint Holiday Party


The joint holiday party was held on Friday, December 5th at the Hyatt Woodfield in Schaumburg.

The Barry White jazz band welcomed guests with holiday music that played throughout the cocktail hour. A beautiful ice sculpture decorated the expansive hors d'oeuvre selection and the open bars provided more

“Christmas cheer”. Brenda Svenneke, Greg McWright,



Kevin DeRose and Dorothy Youngblood sold raffle tickets for the Education fund collecting

a generous amount from our members. The \$100 gift-card raffle prize was won by Shawn Kelly, Ace Hardware Corp. Guests dined on a delicious 5-course meal prior to the evenings entertainment of comedian Tim Clue (see article). Check for more photos on the website!

<http://chicagopaint.org>



VISIT US ON THE WEB:
CHICAGOPAINT.ORG



Chicago Paint and Coatings Association

C h i c a g o P a i n t & C o a t i n g s A s s o c i a t i o n

1701 Woodfield Road
Suite 205
Schaumburg, IL 60173
Phone (847) 240-0102
Fax (847) 240-0103
Email: director@chicagopaint.org

The Chicago Trade Association of Paint & Coatings Manufacturers and the Industry's Leading Suppliers.

MARK YOUR CALENDARS!



Date	Event	Location	Time
Tuesday—Feb. 17th	Legislative Luncheon	Maggiano's Oak Brook	11:30 am
Thursday—March 19th	Spring Dinner Meeting	D.O.C. Wine Bar, Lombard	TBD
Thursday—May 14th	Annual Dinner Meeting	Weber Grill, Lombard	TBD